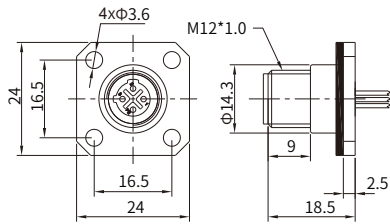


M12 C-coding (Power)

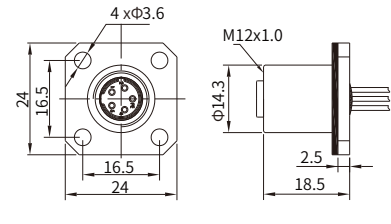
M12 C-coding Straight Connector, Panel Mount, Solder, with Flange

Male



CE RoHS

Female



CE RoHS

Specifications

Contacts	3 (2+PE)	4 (3+PE)	5 (4+PE)	6 (5+PE)
Certification	UL US CYJV2(CYJV8).E321413			
Pin layout(Male)				
Pin layout(Female)				
Standard	IEC 61076-2-101			
Ambient temperature	-15°C~+85°C (flexible installation), -30°C~+85°C (fixed installation)			
Customized temperature	-25°C ~ +85°C (flexible installation), -40°C ~ +85°C (fixed installation)			
Connector insert	TPU			
Connector contacts	Brass with gold plated			
Coupling nut/screw	Brass with nickel plated			
Seal/O-ring	Epoxy resin / FKM			
Insulation resistance	≥100MΩ			
Contact resistance	≤5mΩ			
Earth tag/pin	Unavailable			
IP rating	IP67, IP68 in locked condition			
Mating endurance	>500 cycles			
Rated current	4 A		2 A	
Rated voltage	250V AC/DC		60V AC/DC	30V AC/DC
Wire gauge	0.34mm ² (AWG22)		0.25 mm ² (AWG 24)	

Part Number

Pins	Cable length	Male	Female
3	0.1m	MB12MSCFLF03ST-3401	MB12FSCFLF03ST-3401
	0.3m	MB12MSCFLF03ST-3403	MB12FSCFLF03ST-3403
4	0.1m	MB12MSCFLF04ST-3401	MB12FSCFLF04ST-3401
	0.3m	MB12MSCFLF04ST-3403	MB12FSCFLF04ST-3403
5	0.1m	MB12MSCFLF05ST-2501	MB12FSCFLF05ST-2501
	0.3m	MB12MSCFLF05ST-2503	MB12FSCFLF05ST-2503
6	0.1m	MB12MSCFLF06ST-2501	MB12FSCFLF06ST-2501
	0.3m	MB12MSCFLF06ST-2503	MB12FSCFLF06ST-2503

Default wire colors

Pin No.				
Pin 1	BN	BN	BN	WH
Pin 2		WH	WH	BN
Pin 3	BU	BU	BU	GN
Pin 4	BK	BK	BK	YE
Pin 5			GY	GY
Pin 6				PK